

Site Requirements for RHINO ST Series CU20  
Upgradeable (to Hot) Pressure Washer  
with RHINO HR Series 20 Hose Reel Cabinet

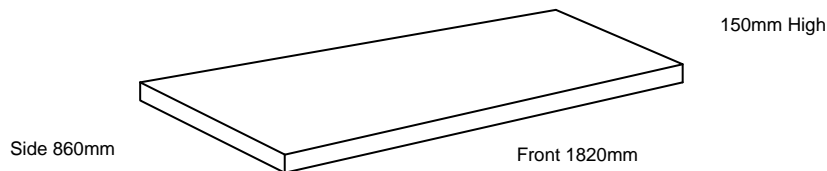


The Pressure Washer and Hose Reel Cabinet must be sited on level Concrete or on a Concrete Plinth. Our engineer will Rawlbolt the units to the Concrete.

The Hose Reel Cabinet can be positioned either on the left or right of the Pressure Washer.

The plinth dimensions required for both Pressure Washer and Hose Reel Cabinet located in the same position are:

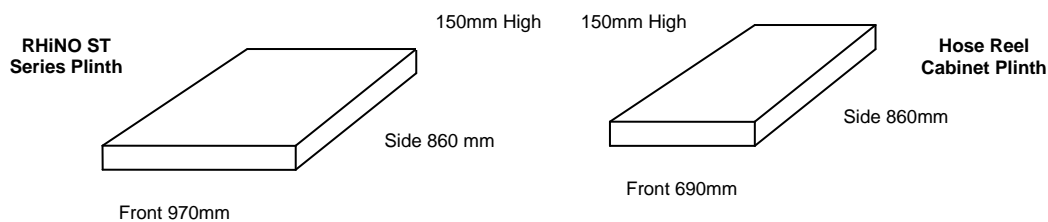
1820mm x 860mm X 150mm High as orientated below.



The Hose Reel Cabinet may also be located up to 2m from the Pressure Washer. In this case two separate plinths will be required.

The RHINO ST Series Plinth dimensions are 970mm x 860mm x 150mm High as orientated below.

The Hose Reel Cabinet Plinth dimensions are 690mm x 860mm x 150mm High as orientated below.



When planning the position of your units in all cases please allow 350mm clear at the rear and sides of the units for service access.

Please find on page 4 a detailed drawing of the Pressure Washer Units providing more detailed sizes if required.

## Electrical Requirements

**The Electrical Load of RHiNO ST Series CU20 Pressure Washer is 9A on a 415v 3Ph+E Supply**

You are required to provide a powered 415v 16A 3Pin+E Commando Type Switched Socket RCD protected outlet of the type shown below – located within 1.2m of the pressure washer. Please also note the supply from your building to this outlet should be protected by a D Type MCB or equivalent motor rated fuses. During the installation and commission our engineer will plug the Pressure Washer into this outlet. (These electrical outlets can be purchased direct from Rhinowash)



## Water Supply Requirements ST Series CU20 Pressure Washer

**A flow of 18lt/min is required** for the Pressure Washer - please ensure the following is available.

You are required to provide the water supply for the Pressure Washer to within 1.2m of unit finished off with a ½" BSP Bib Cock or Stop Cock similar to the type shown below.

Our engineer will connect the Pressure Washer onto this.



Detergent Supply Options for your RHINO ST Series  
Cold Upgradeable Pressure Washer

We strongly recommend that a bulk detergent supply be used on your  
ST Series Cold Upgradeable Pressure Washer.

A 1000lt IBC container or 205lt drum as featured below can be located next to your ST Series Cold  
Pressure Washer and our engineer will connect to these.



1000 Lt  
IBC  
Container

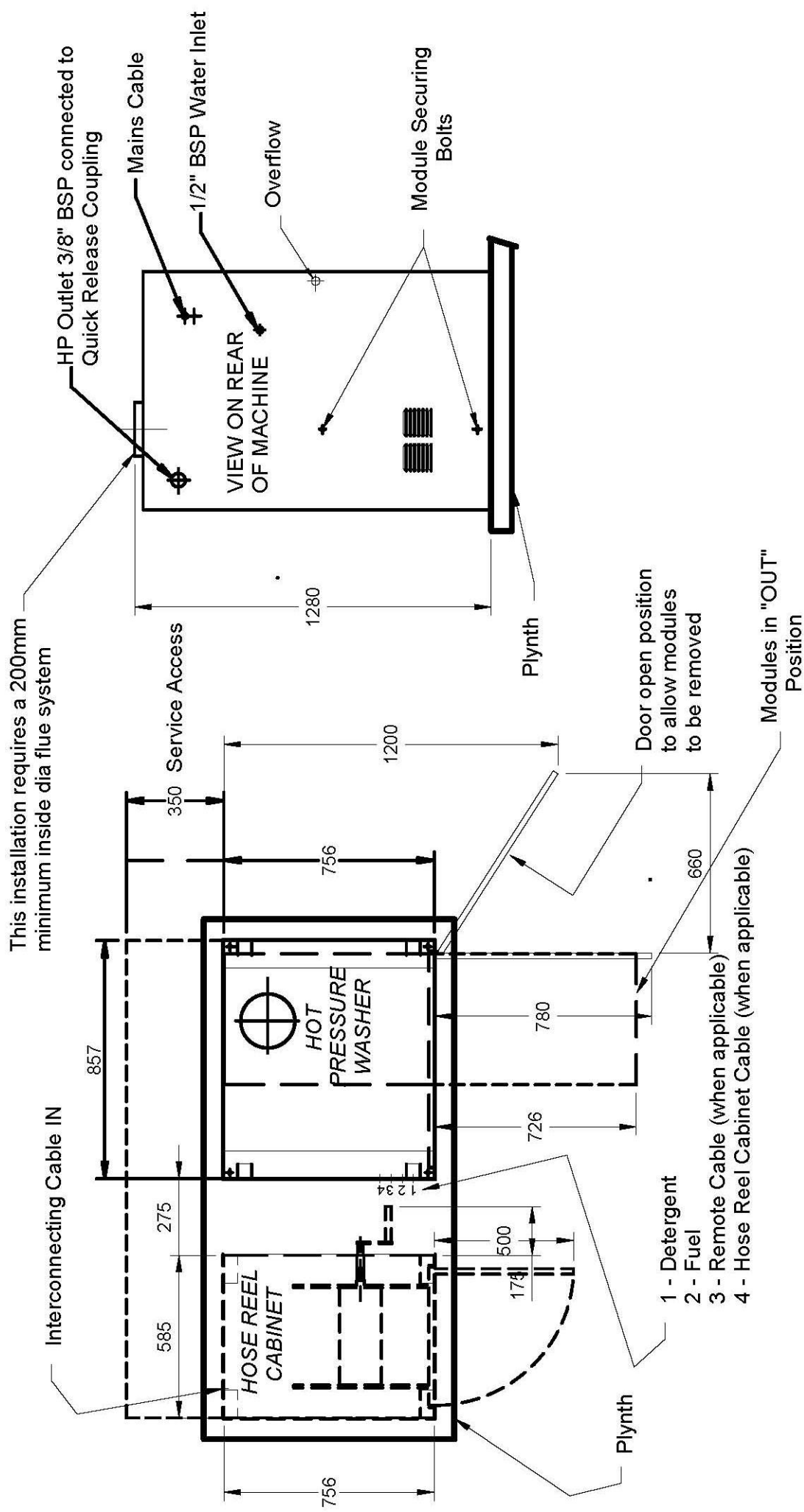


205Lt  
Drum

If you do not wish to use any form of external detergent supply to your Rhinowash Pressure Washer we  
will supply your Pressure Washer complete with a 25lt detergent container housed within the machine.

# RHINOWASH

## Site Requirements for RHINO ST Series Hot Pressure Washer with HR Series Hose Reel Cabinet



**NOTE: - IF M/C IS TO BE INSTALLED IN A BUILDING  
DOOR WIDTH TO BE 950mm WIDE MINIMUM.**

Drawing No:- 2950267 Issue 3  
Sheet 1 of 1 Scale:- 1:20